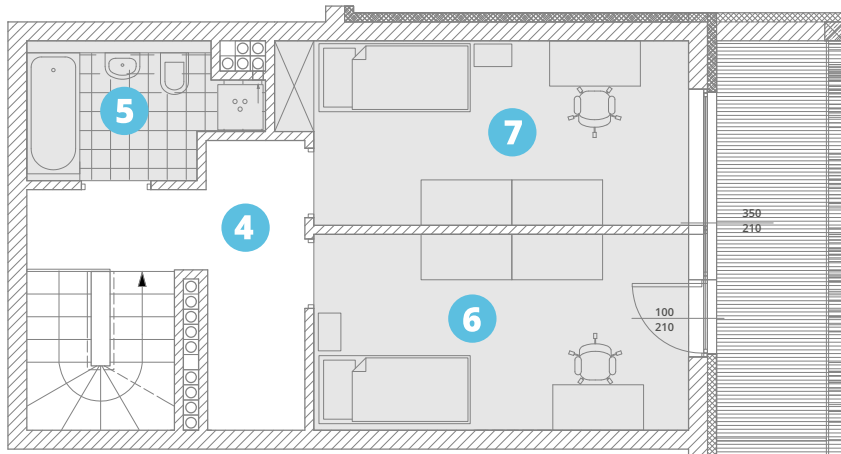


powierzchnia użytkowa:

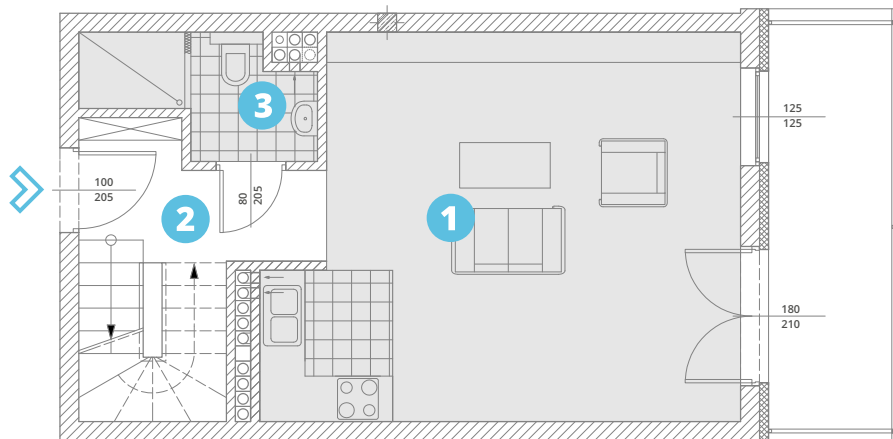
80,53m²

- | | |
|---------------------|--------------|
| 1. salon + aneks k. | 29,97 |
| 2. komunikacja: | 8,70 |
| 3. W.C. | 3,98 |
| 4. antresola: | 7,47 |
| 5. antresola: | 4,87 |
| 6. antresola: | 12,83 |
| 7. antresola: | 12,71 |



taras: 9,46m²

antresola: 37,88m²



balkon: 9,63m²

piętro 4: 42,65m²

piętro 4-5

