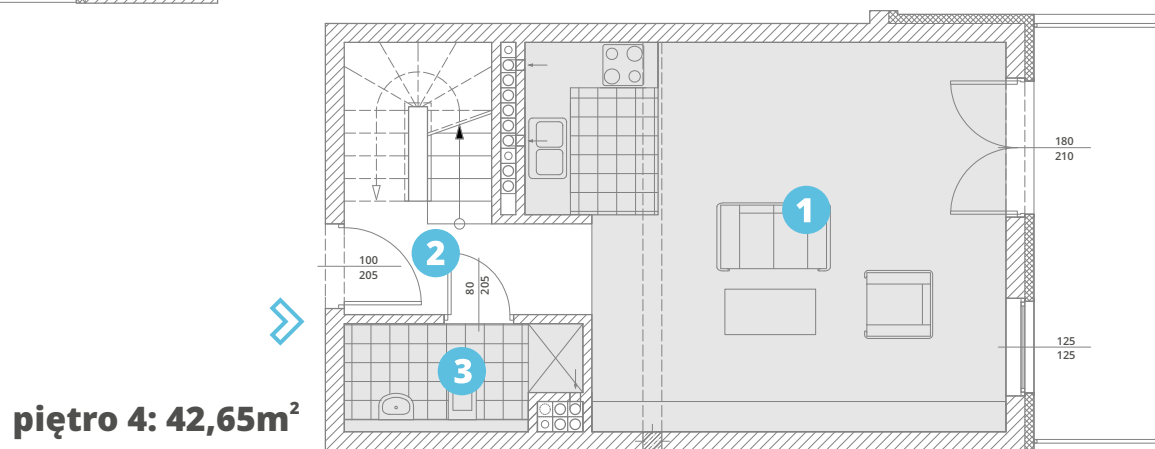
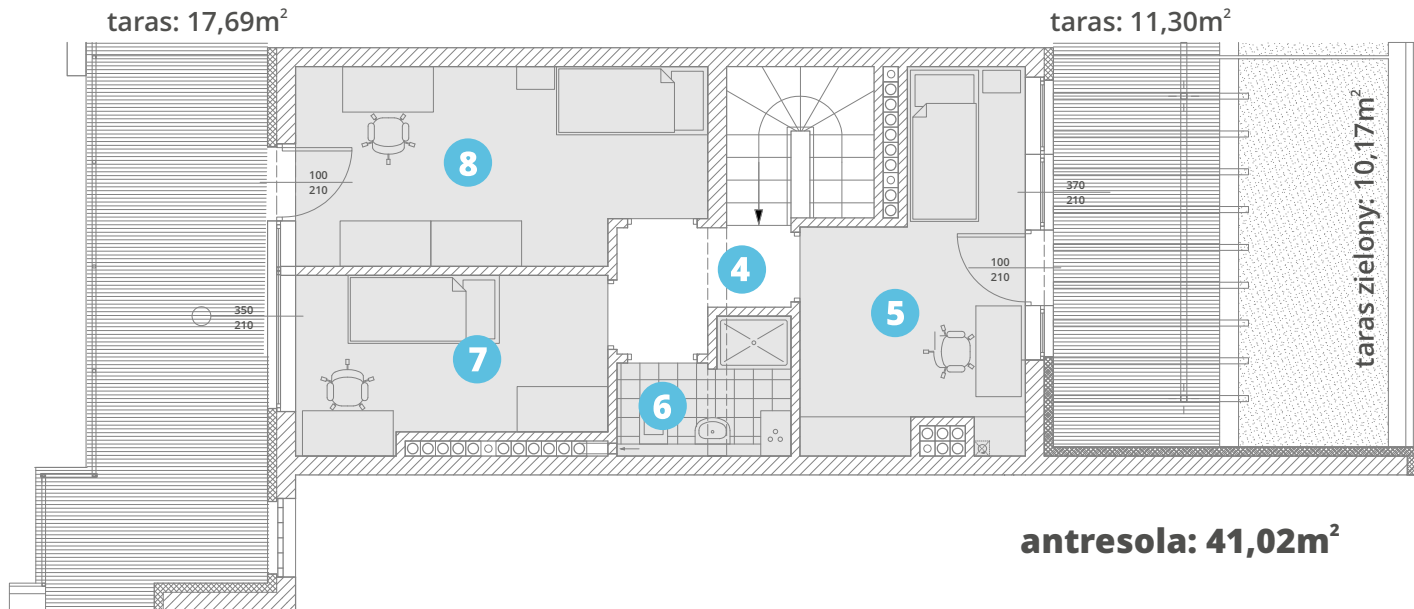


powierzchnia użytkowa:

83,67m²

- | | |
|---------------------|--------------|
| 1. salon + aneks k. | 30,21 |
| 2. komunikacja: | 8,30 |
| 3. W.C. | 4,14 |
| 4. antresola: | 3,16 |
| 5. antresola: | 11,90 |
| 6. antresola: | 3,43 |
| 7. antresola: | 8,97 |
| 8. antresola: | 13,56 |



piętro 4-5

