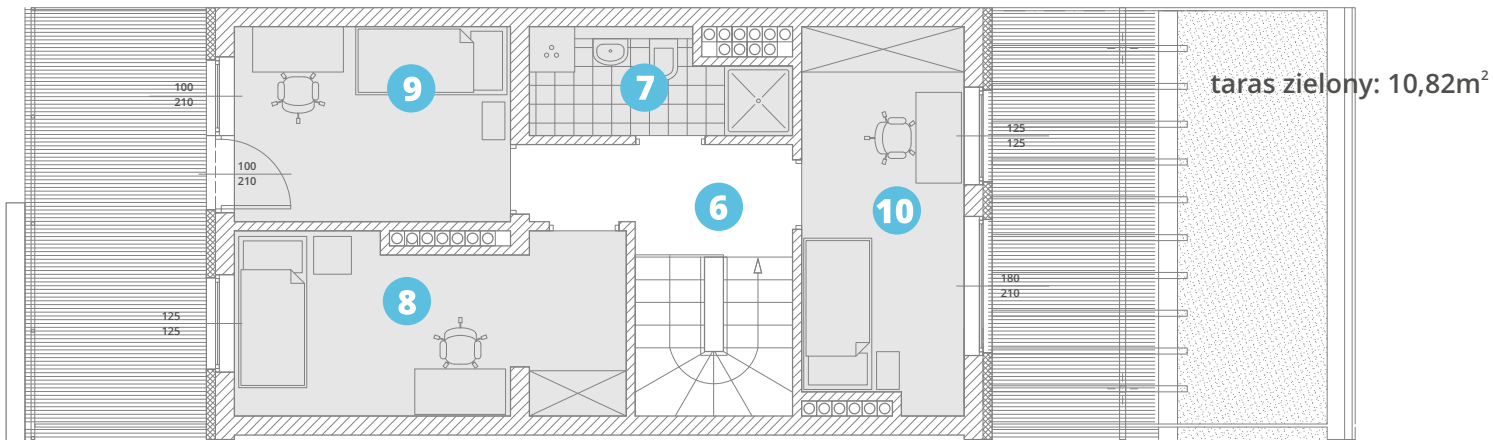


antresola: 40,81m<sup>2</sup>

taras: 12,11m<sup>2</sup>



taras: 13,21m<sup>2</sup>

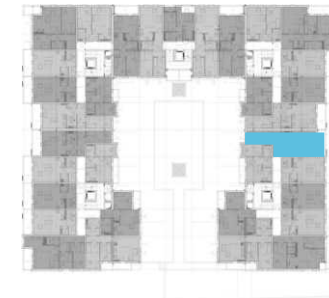
taras zielony: 10,82m<sup>2</sup>

powierzchnia użytkowa:

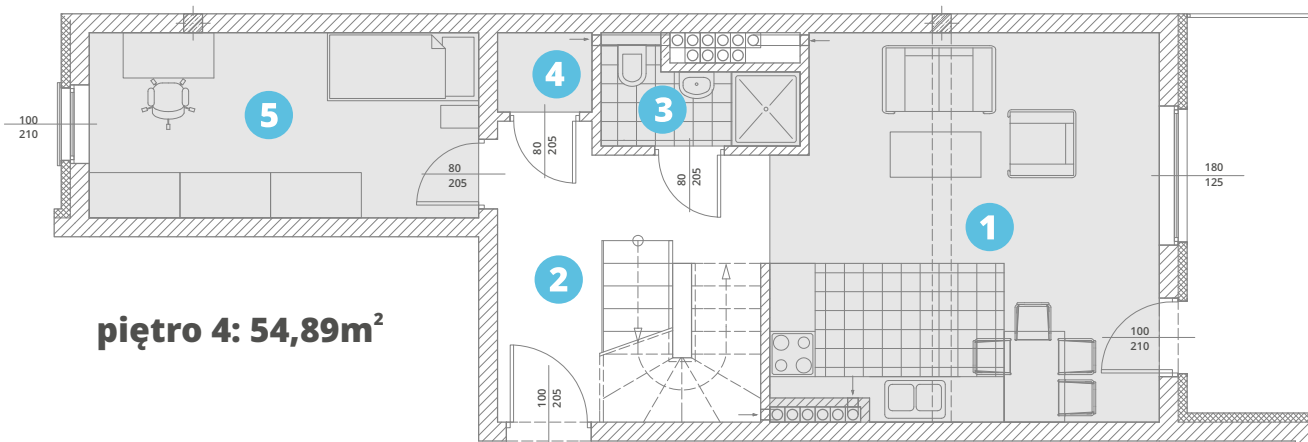
**95,70m<sup>2</sup>**

1. salon + aneks k.	25,26
2. komunikacja:	12,71
3. W.C.	2,99
4. garderoba:	1,31
5. pokój:	12,62
6. antresola:	4,52
7. antresola:	4,32
8. antresola:	11,90
9. antresola:	9,42
10. antresola:	10,65

**piętro 4-5**



balkon: 9,50m<sup>2</sup>



**piętro 4: 54,89m<sup>2</sup>**

