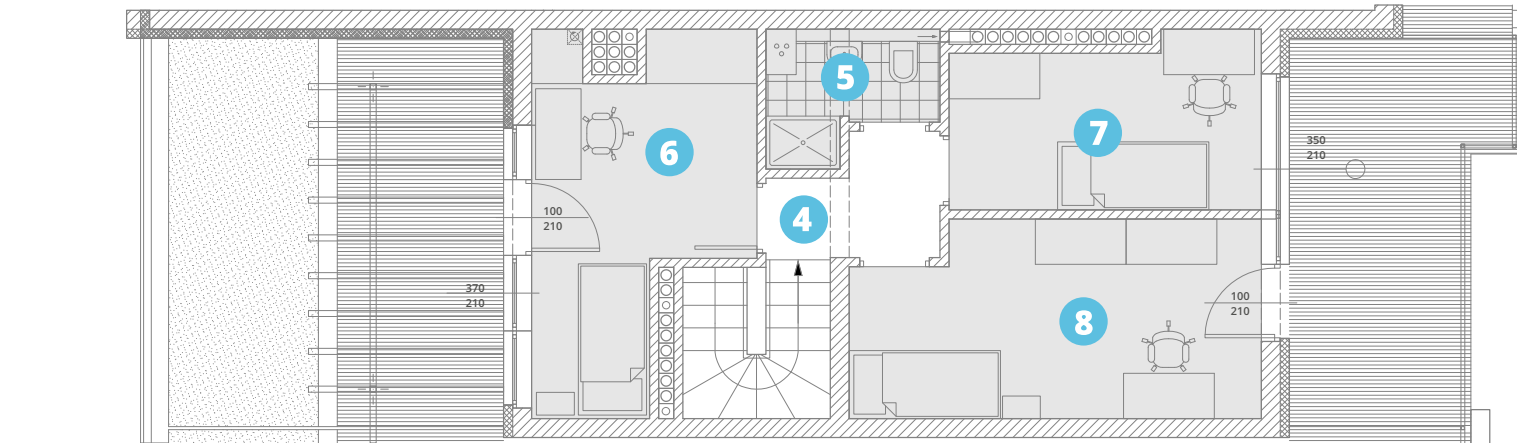
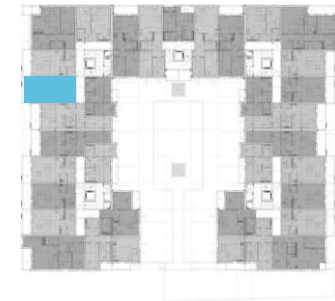


powierzchnia użytkowa:

83,35m²

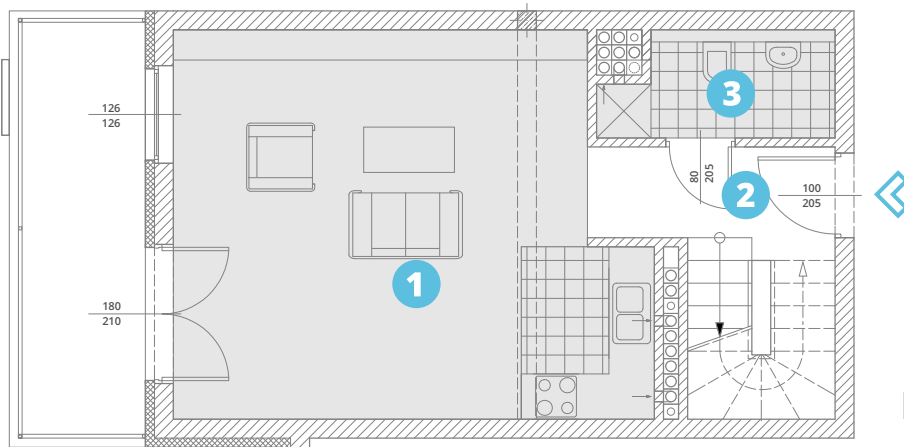
- | | |
|---------------------|--------------|
| 1. salon + aneks k. | 30,21 |
| 2. komunikacja: | 8,30 |
| 3. W.C. | 3,99 |
| 4. antresola: | 3,16 |
| 5. antresola: | 3,43 |
| 6. antresola: | 11,73 |
| 7. antresola: | 8,97 |
| 8. antresola: | 13,56 |

piętro 4-5



taras zielony: 10,17m² taras: 11,30m²

antresola: 40,85m² taras: 13,37m²



balkon: 10,12m²

piętro 4: 42,50m²